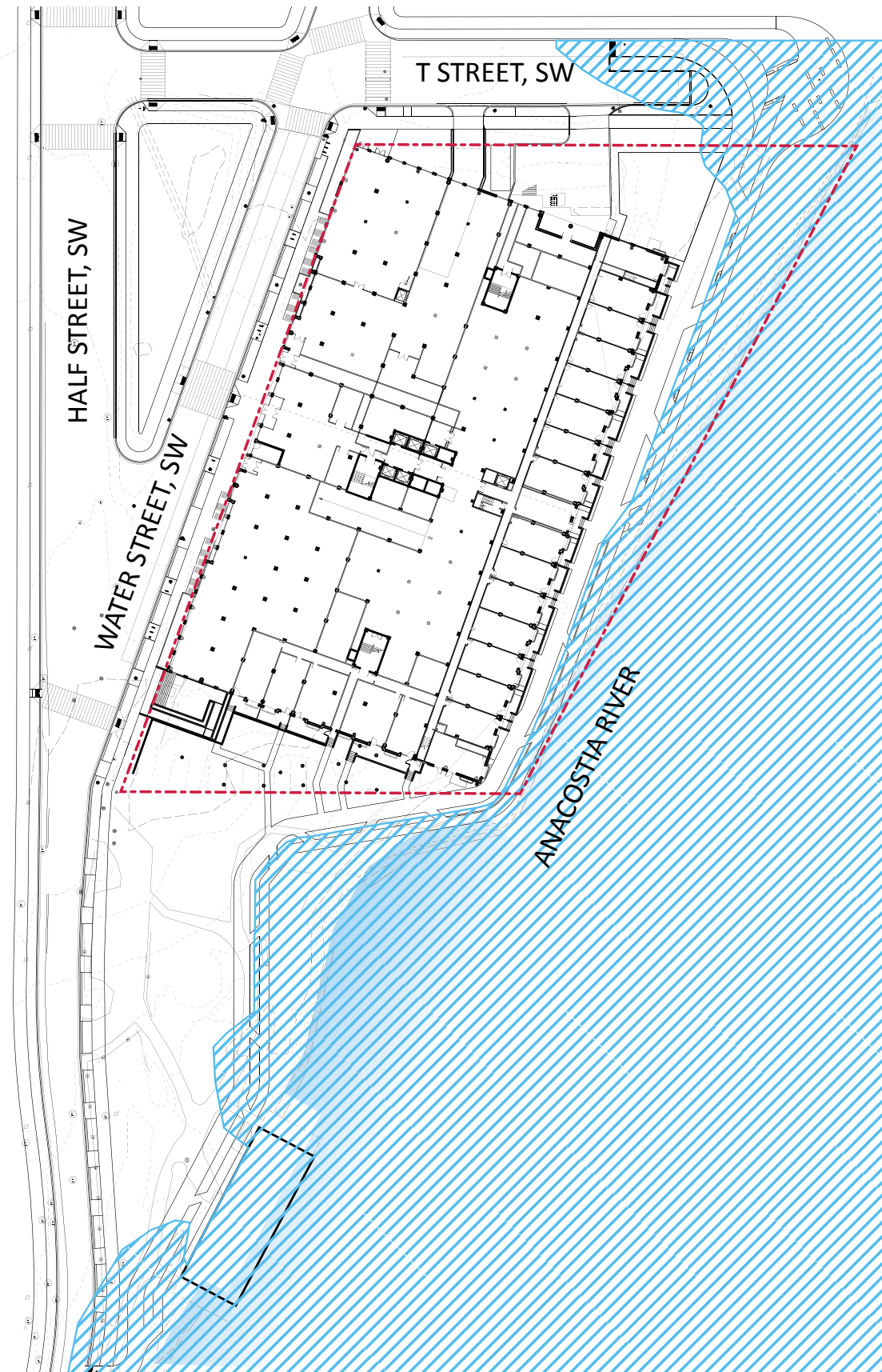




ORIGINAL FLOOD PLAIN









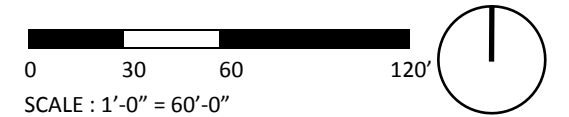
PROPOSED FLOOD PLAIN

ADDITIONAL INFORMATION

100 Year flood plain effects on site:
 100 year flood elevation: 10'-6"
 Proposed first level residential elevation 14'-0"
 Proposed promenade elevation: 12'-0"

LEGEND

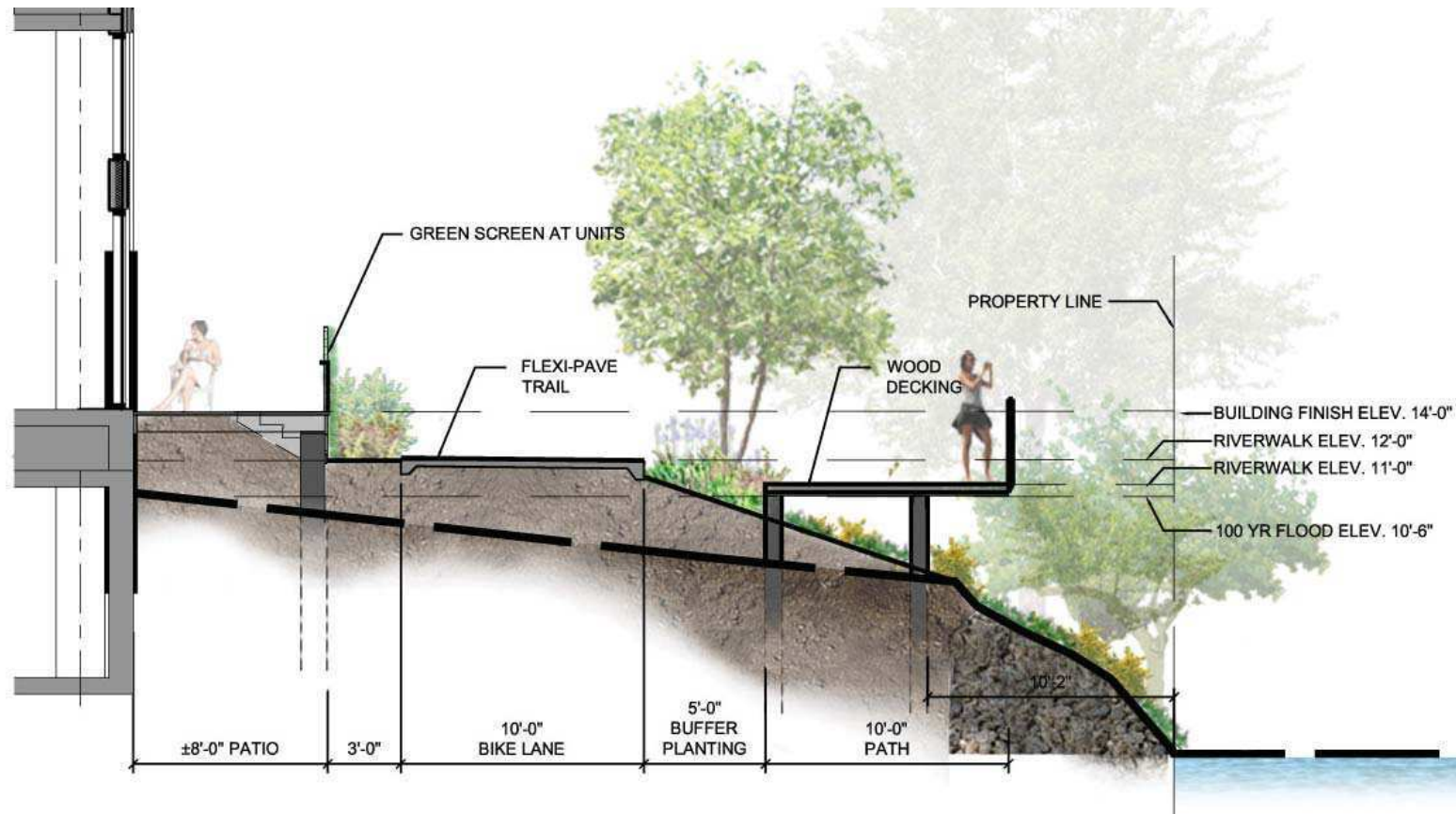
-  property line
-  existing tree
-  bulkhead at river
-  existing green space
-  existing pavement
-  100 year flood line



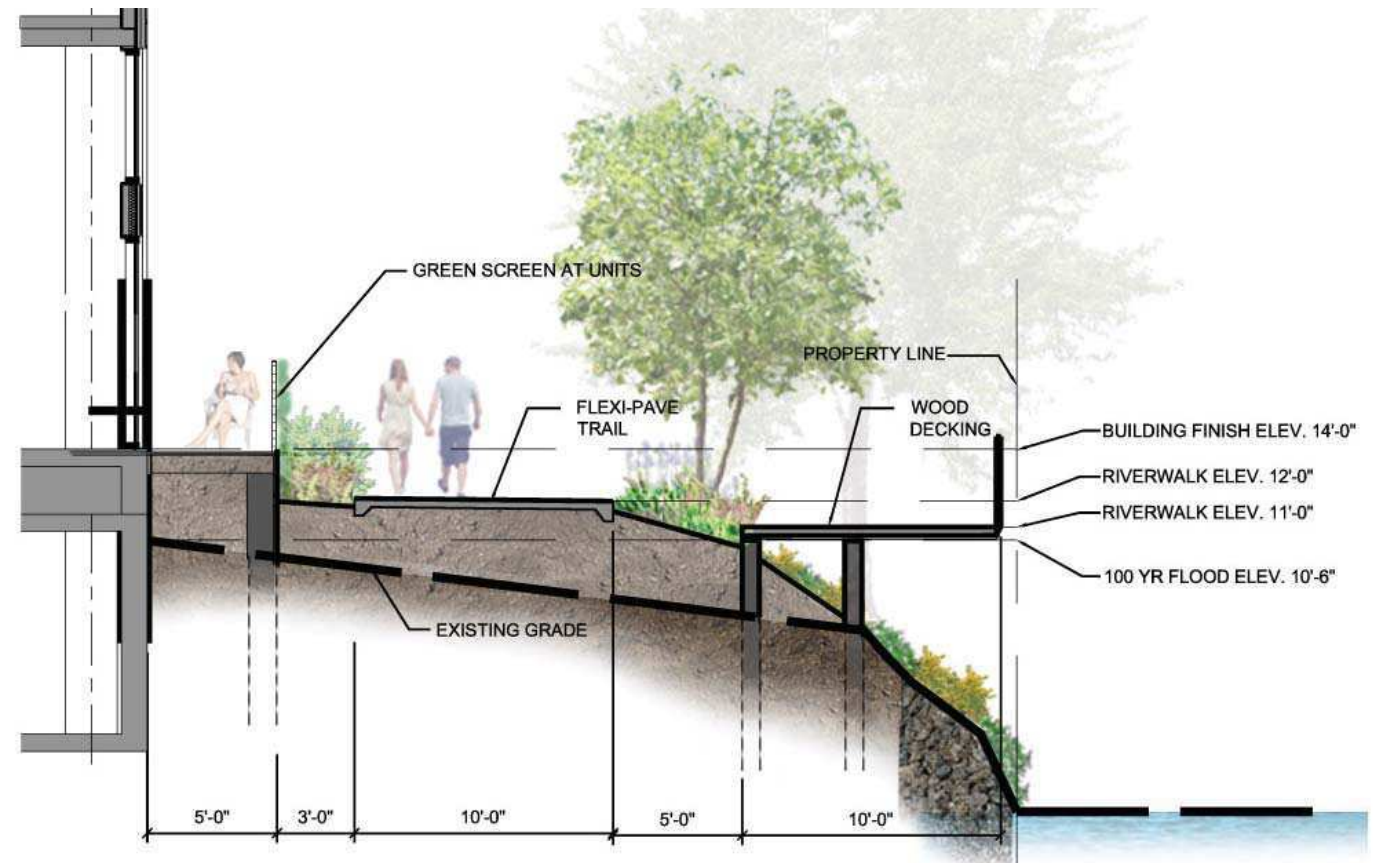
1900 HALF STREET

Square 666 Lot 15 / 1900 Half Street SW, Washington, DC · Douglas Development Corporation · Antunovich Associates © · Dewberry Consultants LLC · Lee and Associates Inc.

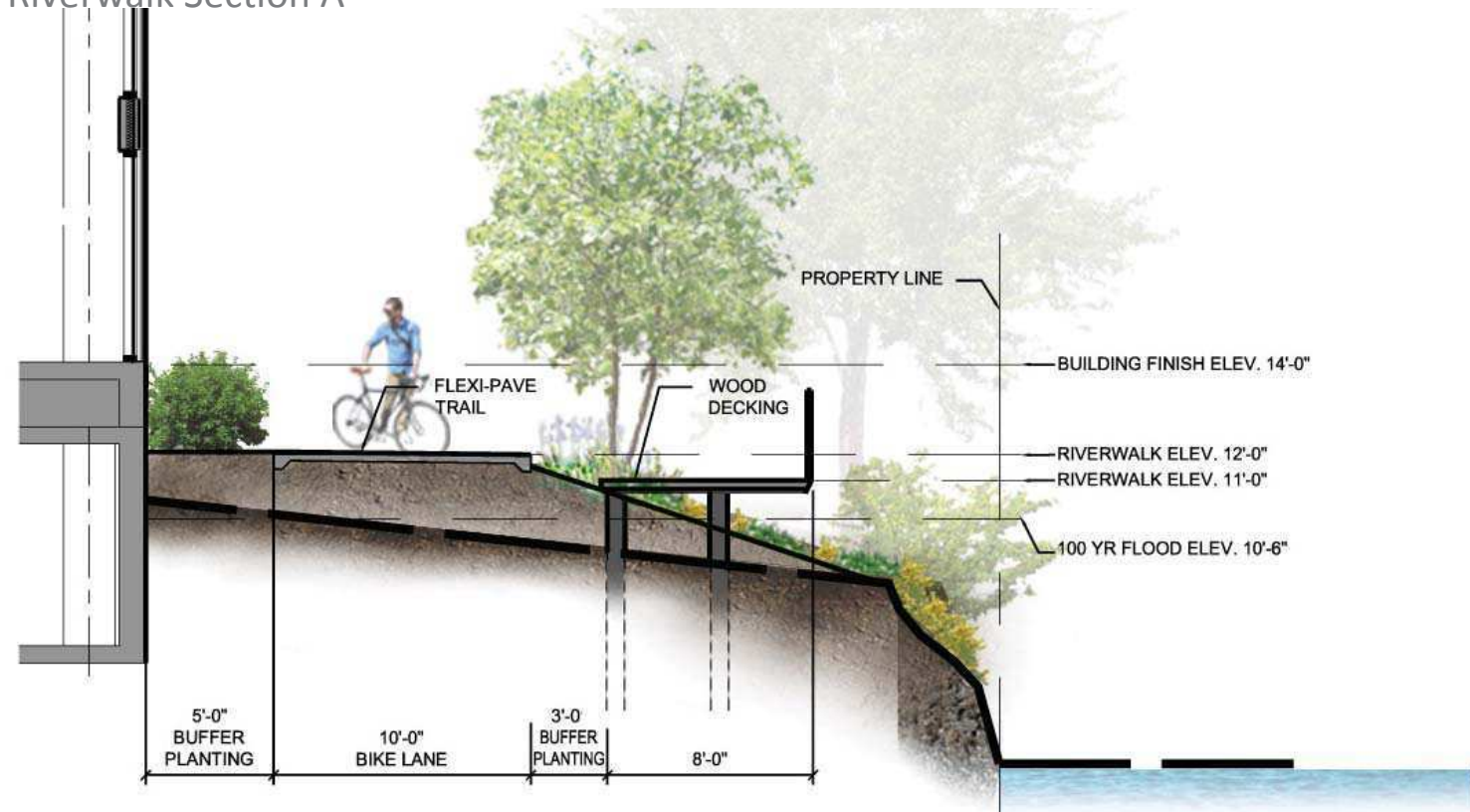
site analysis | 100 year flood plain



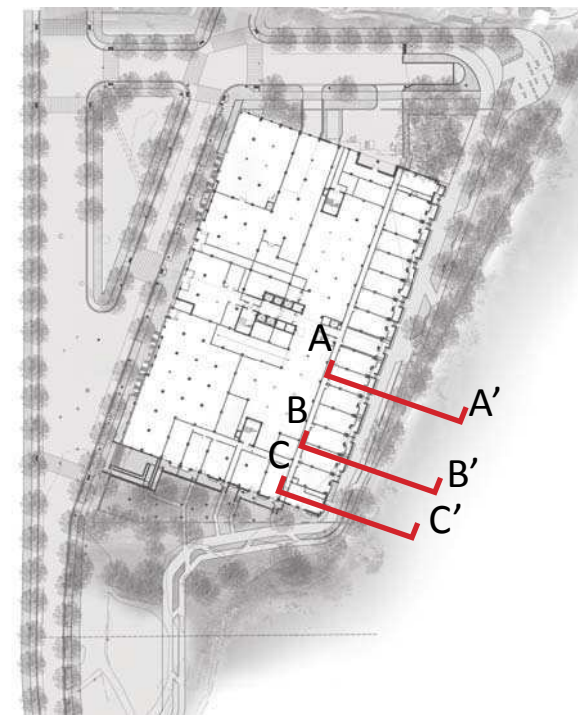
Riverwalk Section A



Riverwalk Section B



Riverwalk Section C



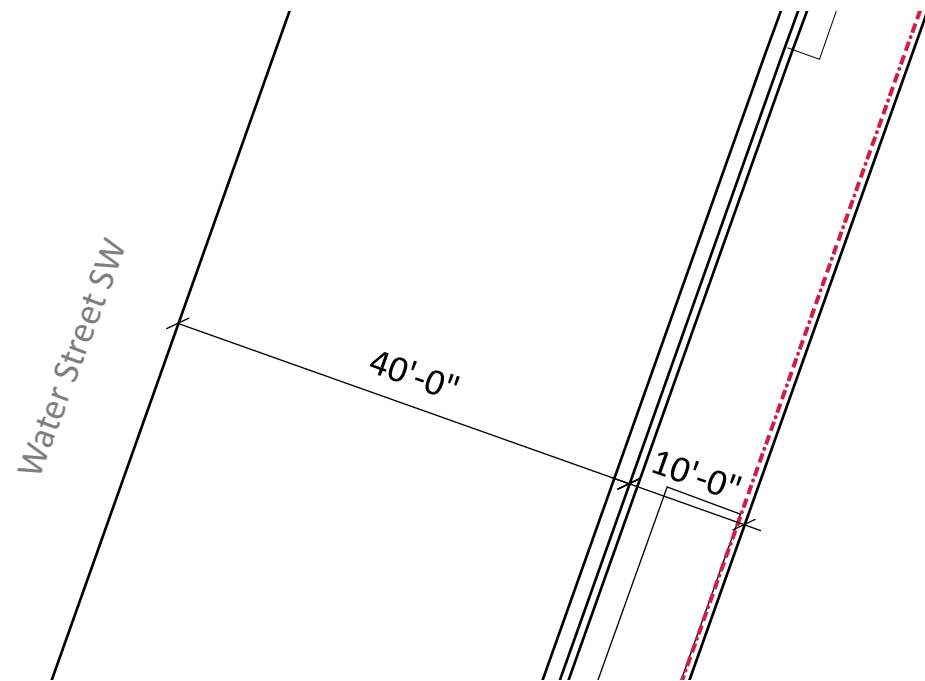
Key Plan

1900 HALF STREET

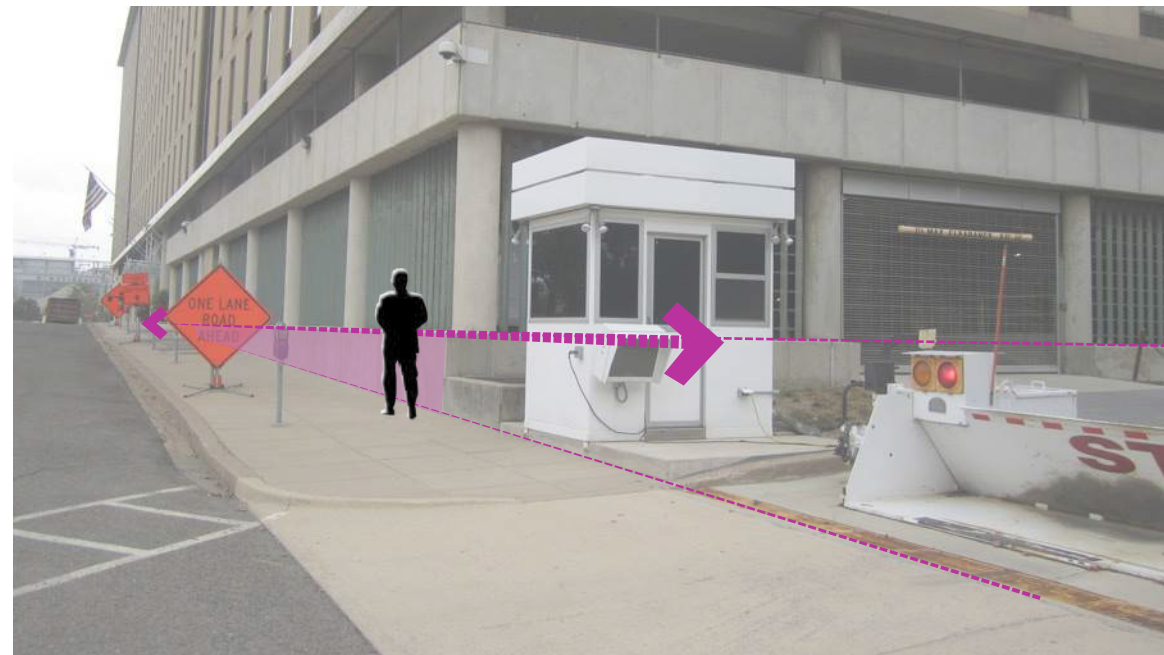
Square 666 Lot 15 / 1900 Half Street SW, Washington, DC · Douglas Development Corporation · Antunovich Associates © · Dewberry Consultants LLC · Lee and Associates Inc.

sections and elevations | on-grade spaces

June 20, 2016

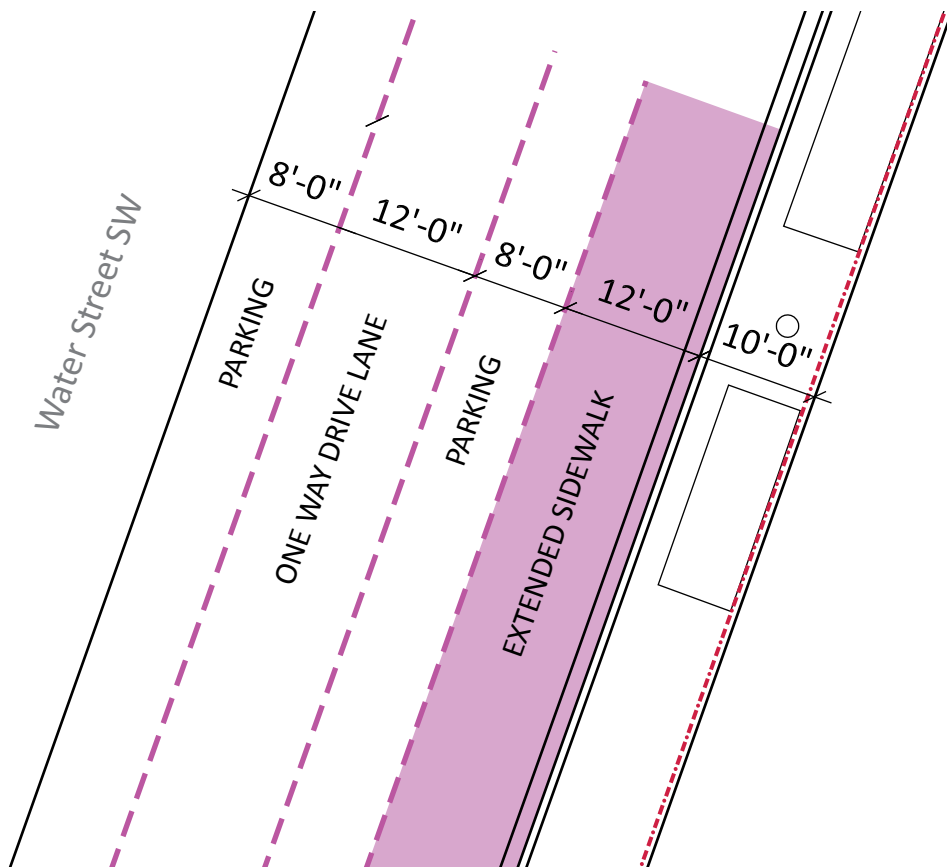


Existing condition at Water Street

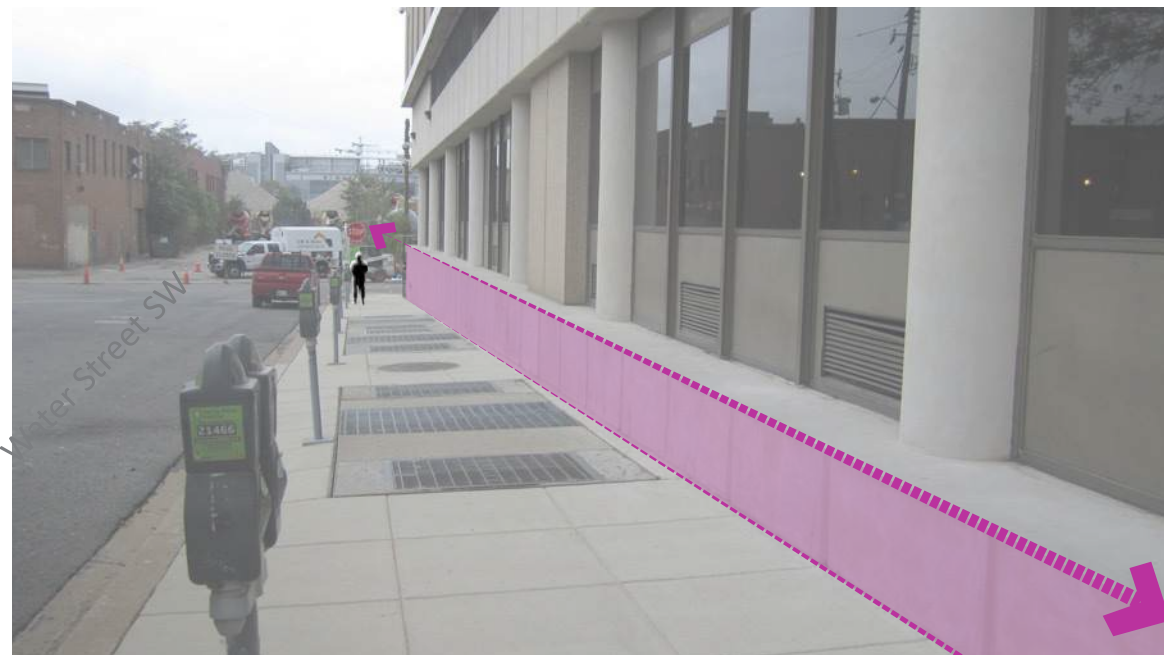


Water Street at southern end of building

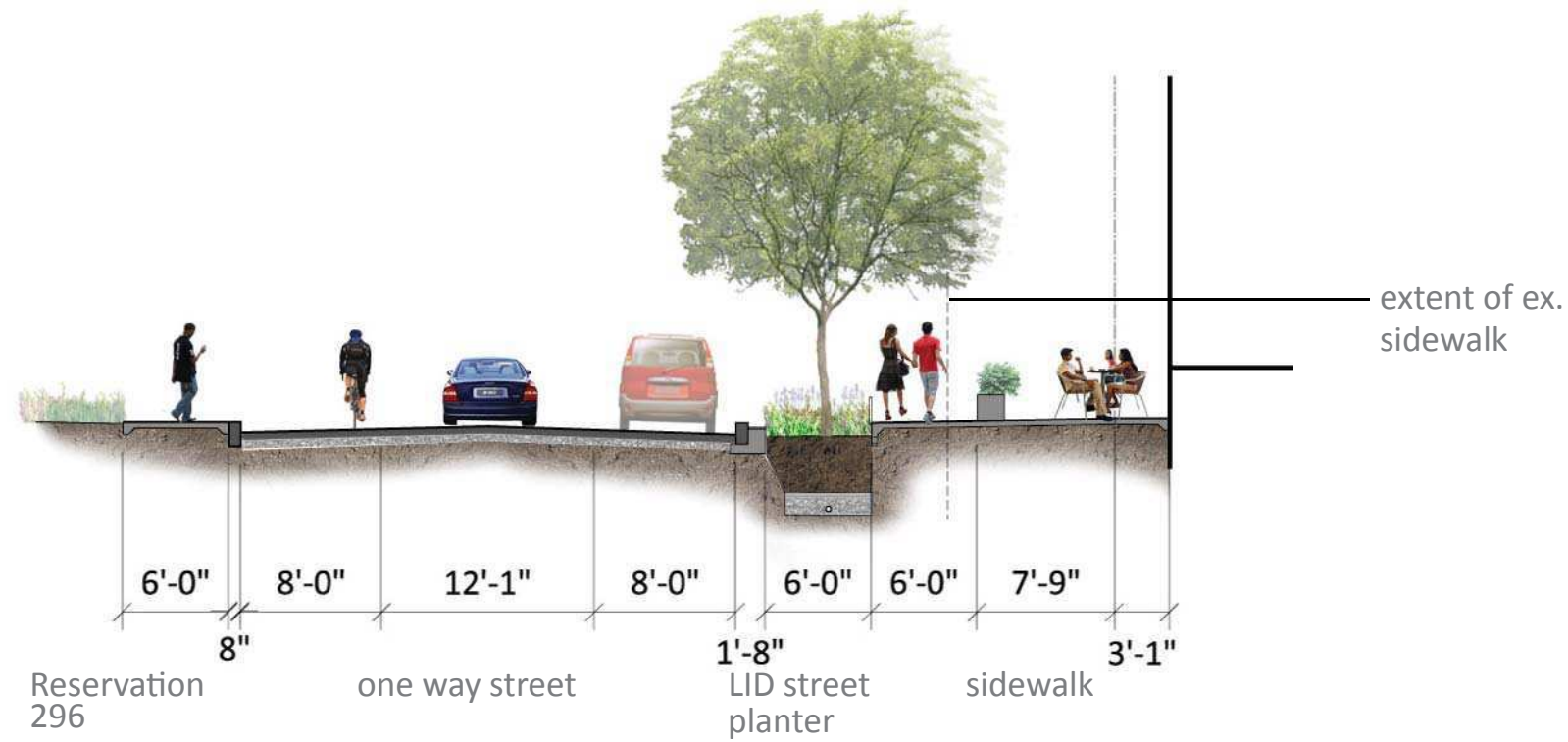
ADDITIONAL INFORMATION
Grading of Water Street creates a difficult situation to connect the existing sidewalk with proposed retail entrances on the Ground Floor. Addition space in the pedestrian zone will provide room to incorporate ADA accessible entry points and provide additional green space along this expanse.



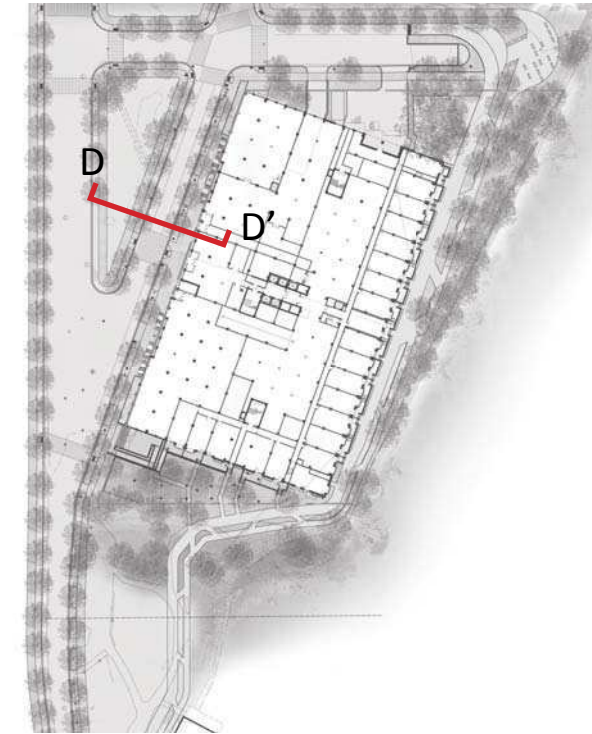
Proposed condition at Water Street to explore solutions to grading conflicts at retail entrances and expansion of pedestrian space



Water Street at northern end of building



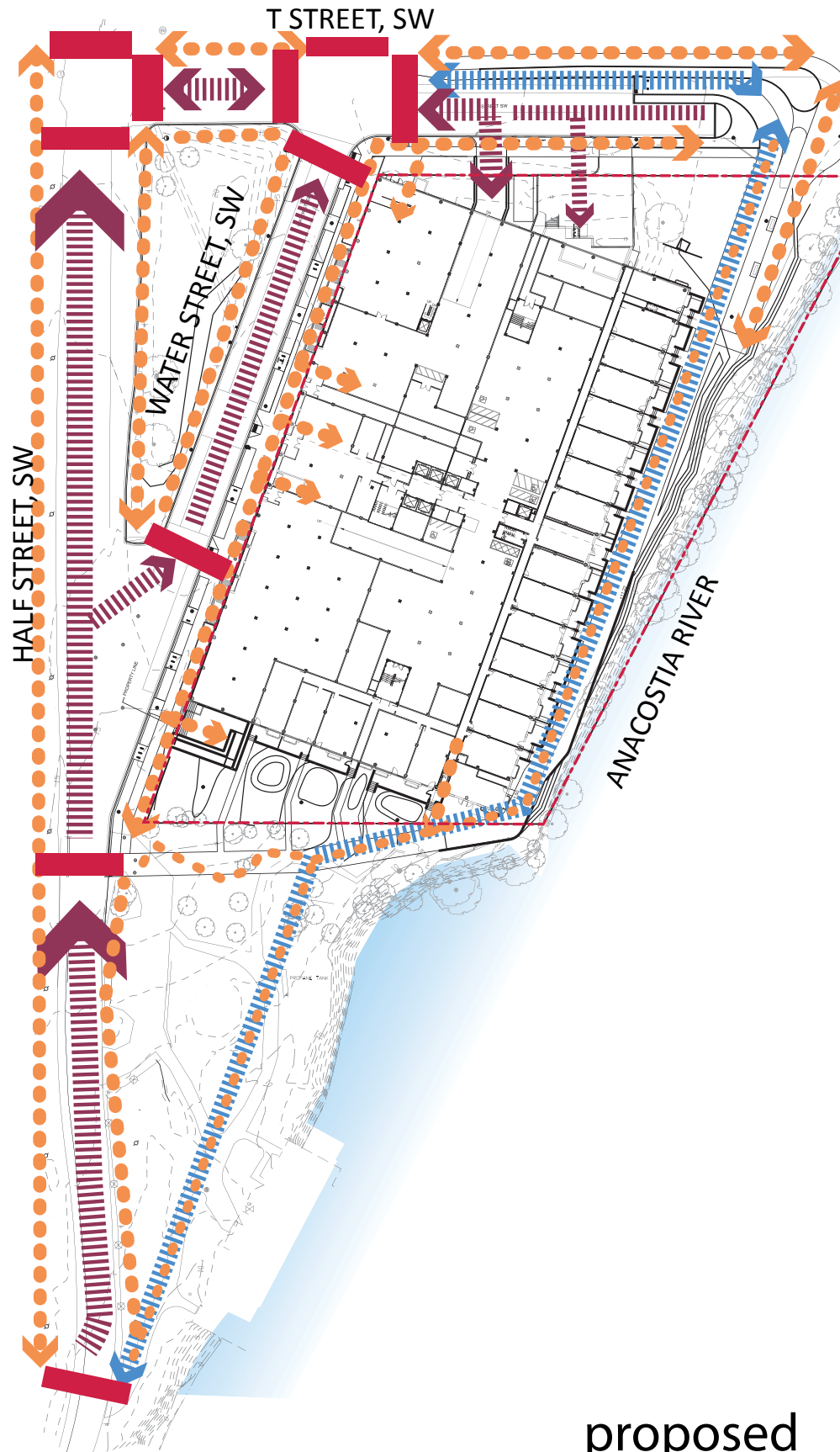
Water Street Section D



Key Plan









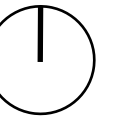
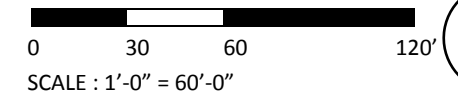
existing



proposed

LEGEND

-  property line
-  proposed crosswalks
-  vehicular traffic/
SHARED BIKE LANES
-  sidewalks
-  dedicated bike lanes
-  shared pedestrian/
bike path



1900 HALF STREET

Square 666 Lot 15 / 1900 Half Street SW, Washington, DC · Douglas Development Corporation · Antunovich Associates © · Dewberry Consultants LLC · Lee and Associates Inc.

site analysis | circulation

June 20, 2016



brick sidewalk



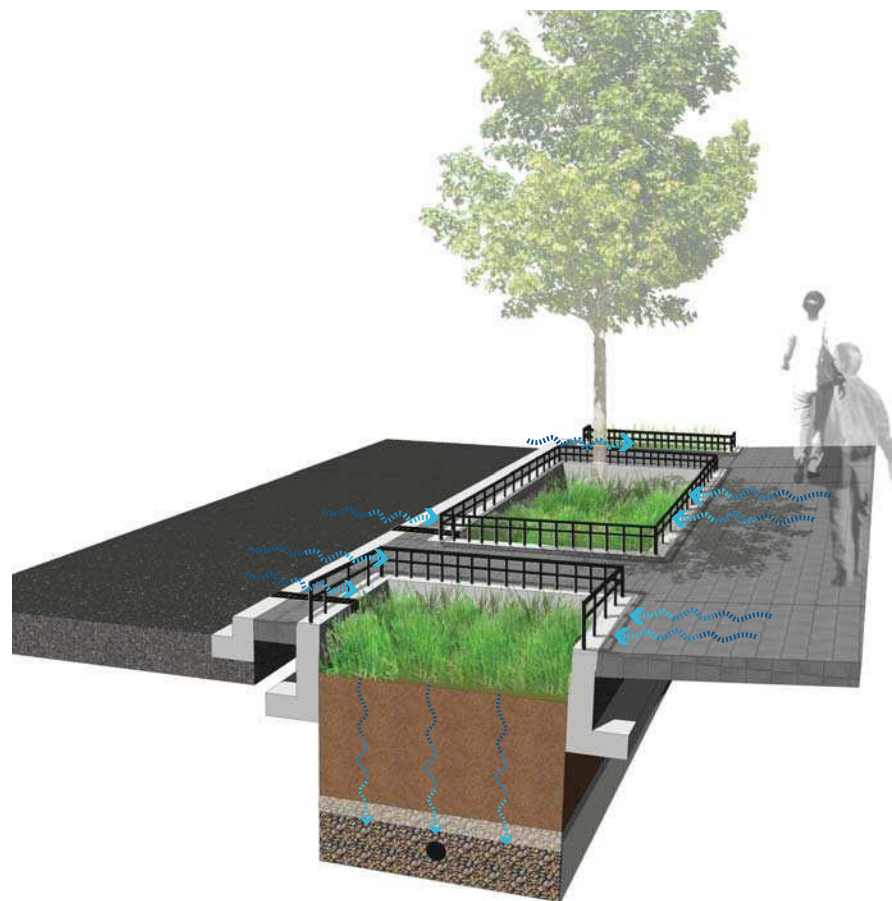
street furnishing -bike racks



street furnishing - bench



street furnishing - trash receptacles



sidewalk - Water Street, T STREET & HALF STREET



street lights - washington globes



street furnishing -parking meter

1900 HALF STREET

Square 666 Lot 15 / 1900 Half Street SW, Washington, DC · Douglas Development Corporation · Antunovich Associates © · Dewberry Consultants LLC · Lee and Associates Inc.

site materials | typical site elements

June 20, 2016

CANOPY TREES

spring/summer

fall



spring

summer

fall



spring/summer

fall



UNDERSTORY TREES

spring

summer

fall



GRASSES

spring/summer

fall/winter



spring

summer

fall/winter



SHRUBS

spring/summer

fall/winter



PERENNIALS

summer/fall



spring/summer/fall

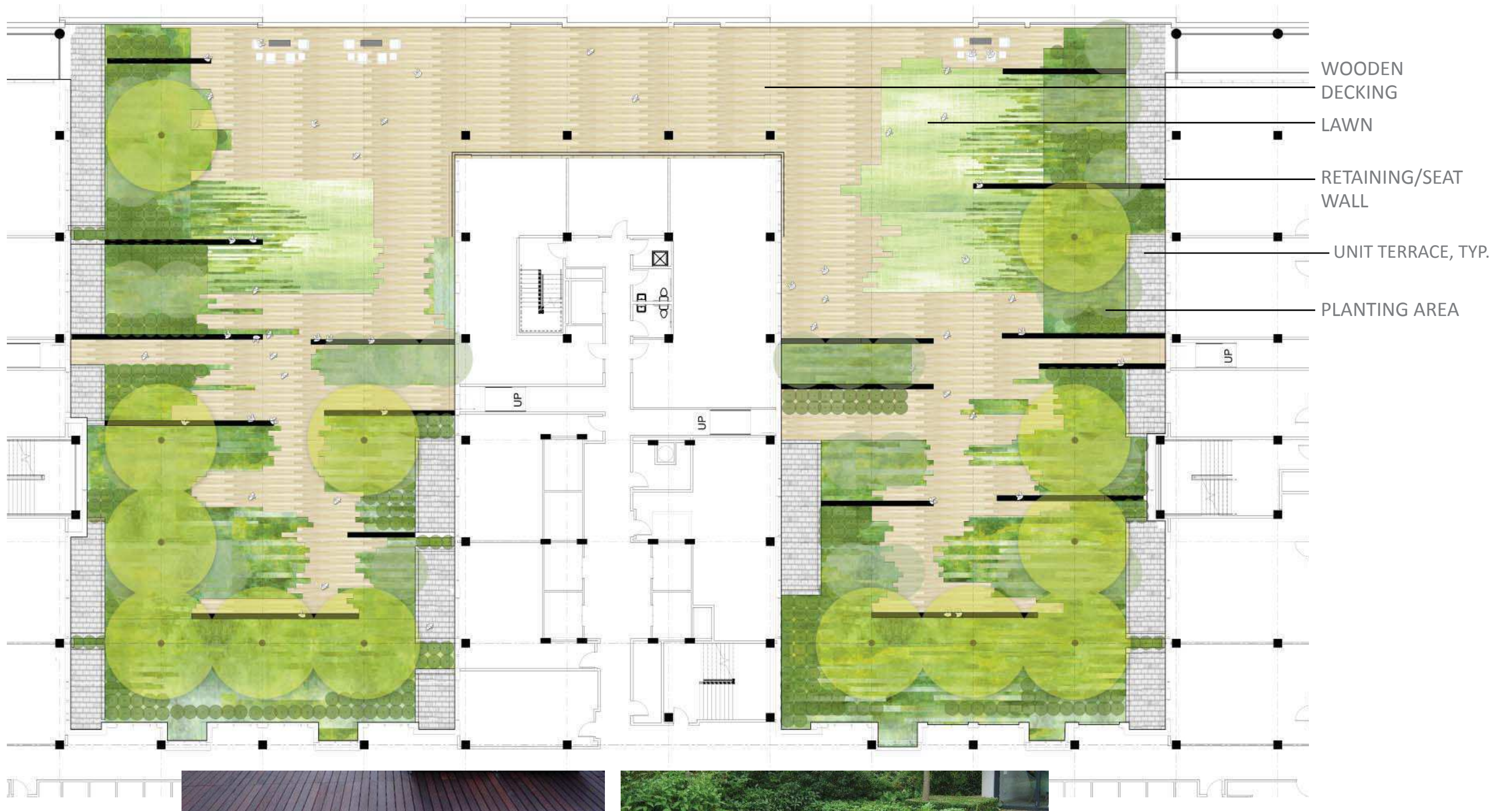


fall



summer/fall





1900 HALF STREET

Square 666 Lot 15 / 1900 Half Street SW, Washington, DC · Douglas Development Corporation · Antunovich Associates © · Dewberry Consultants LLC · Lee and Associates Inc.

site plan | level 2 courtyard

June 20, 2016

CANOPY TREES

spring

summer

fall



UNDERSTORY TREES

spring

summer

fall



SHRUBS

all seasons

all seasons



GRASSES

spring/summer/fall winter

spring/summer/fall



PERENNIALS AND GROUNDCOVERS

spring

summer/fall/
winter

spring/summer/
fall

winter

spring/summer

fall/winter





Low Area @ Center of
Courtyard to drain and
accommodate paths

Soil Mound up to 30"+
@ Column Heads
to plant Canopy Trees

24" CMU
Wall
to retain
soil
depth

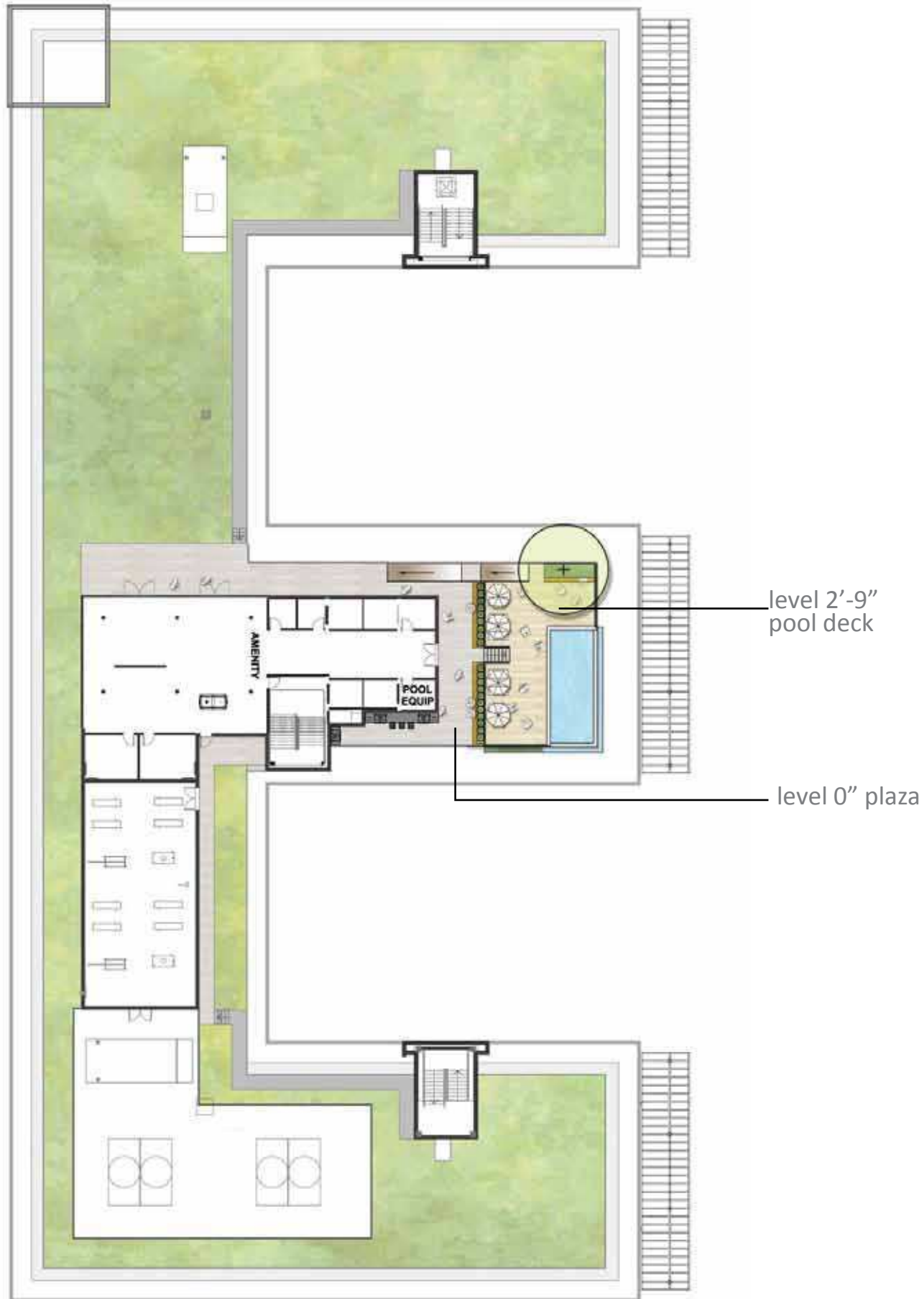
Private
Terrace

1900 HALF STREET

Square 666 Lot 15 / 1900 Half Street SW, Washington, DC · Douglas Development Corporation · Antunovich Associates © · Dewberry Consultants LLC · Lee and Associates Inc.

sections | level 2 typical section

June 20, 2016



pool with infinity edge



combined planting and seating

1900 HALF STREET

Square 666 Lot 15 / 1900 Half Street SW, Washington, DC · Douglas Development Corporation · Antunovich Associates © · Dewberry Consultants LLC · Lee and Associates Inc.

site plan & precedent images | rooftop

June 20, 2016

CANOPY TREES

spring



summer



fall



GRASSES

spring/summer/fall winter



spring/summer/fall



SHRUBS

spring/summer



fall/winter



PERENNIALS

spring/summer/fall



summer/fall



GROUNDCOVERS

spring



summer/fall/
winter



spring/summer/
fall



winter



spring/summer



fall/winter

